



Succulent Morsels

News of the Chinle Cactus & Succulent Society

December 2009

Vol. 1, No. 12

To promote knowledge, enjoyment, cultivation, and conservation of cacti and other succulent plants among its members, other individuals and organizations throughout West-Central Colorado.

ANNUAL MEETING TO CELEBRATE 10TH ANNIVERSARY OF SOCIETY

The Chinle C&S Society will celebrate their “10th” anniversary on the 10th of December as they gather at the Tiara Rado Golf Club Pinon Grill for their Annual Dinner. The evening will be a gala event, with opportunities to socialize, eat a delicious meal, and participate in the Silent Auction and door prizes events. Don Campbell, Loren Benoit, and Maryann Benoit have put together a slide show depicting key events in the Society’s 10 year history. Nancy Glover has been busy rounding up door prizes and Don Campbell reports that the plants he ordered from Crump’s for the drawings and silent auction are very attractive, numbering around 30, so be prepared to bid on the best ones for the Silent Auction.

The Business Meeting that follows the dinner will include the election of new officers (see the slate below). Additionally, the Society will honor the hard work, time and leadership the outgoing officers have given: President, Dieter Kubisch; Vice President, Don Campbell; Pat Severson, Treasurer; and Carolyn Logan, Secretary. As in years past, members will be recognized for their Garden Party participation.

By the number of advanced reservations, it looks like there will be a good turnout. Put the 10th on your calendar, and hope to see you at the Pinon Grill!

FABULOUS DOOR PRIZES & PLANTS, SILENT AUCTION ITEMS!

ATTENTION MEMBERS! There are over 50 fantastic door prizes to be awarded to Chinle members at the Annual Dinner Meeting. All of these door prizes have been donated by members of the Chinle C&S Society, so no one should go home empty handed. Don’t forget to come prepared to bid on Silent Auction items, too.

If you haven’t signed up for the dinner, you will be missing a great evening.

SLATE OF OFFICERS FOR 2010 ANNOUNCED

Joy Bush, Chairperson of the Nominating Committee, presented a complete slate of nominees for officers of the Chinle C&S Society for 2010 at the Nov. 12th meeting. These new officers will be voted on by the membership during the business portion of the December Annual Dinner Meeting of the Society. Nominations will be taken from the floor as well.

According to the Society bylaws, the names of the nominees are to be published to the members. The nominees are:

NOMINEES FOR 2010 CHINLE C&S SOCIETY BOARD

President - Carolyn Logan

Vice President - Winton Brophy

Secretary - Peter Newbury

Treasurer - Lilly McAnally, with Sarah Boggs as alternate

Member-at-Large - Maryann Benoit

Newsletter Editor - Janet Hassell

FROM TEQUILA TO TEA...

Jennifer and Rob presented a fascinating November program

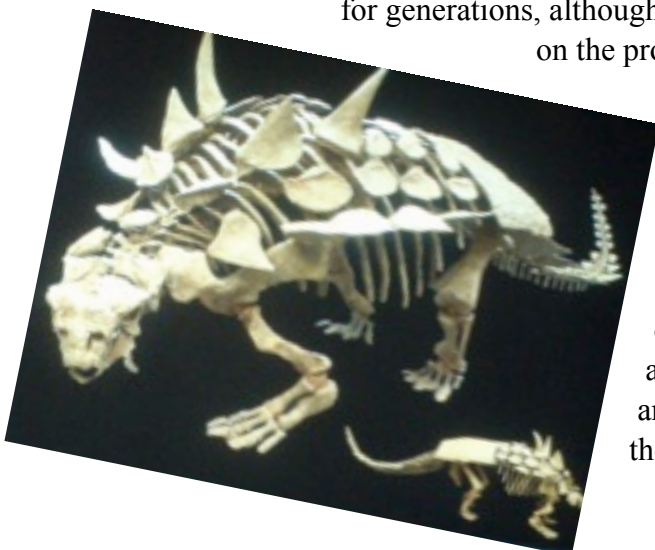


The November meeting of the Chinle C&C Society had a great turnout, and were treated to an overview of Mexican cacti and how they are used their in daily life.

The agave plant shown above has been used to produce alcoholic beverages for generations, although more recently the focus has been on the production of tequila. The artwork on

the right depicts the effect that “spirits” can have on the consumer!

The peyote plant also has a significant influence on the customs and practices of the Mexican population and is often depicted in the artwork designs as shown on the right.



Of course Jennifer and Rob had to show us a sample of their dinosaur production!!

Jennifer shared some lovely photos of the Kew Gardens in the UK, cactus and other scenic gardens.



As you can see by the photos here, the members had some good socializing, and enjoyed Tom Burrow's homemade pineapple-oatmeal and chocolate chip cookies.

TO CORRECT THE RECORD

Regarding the last newsletter article about Bloomin' Deals, the actual get-together to prepare the plant happened sometime the first week of October. On October 14, Al and Pat Severson, Dieter Kubisch and Tom Burrows went to Don Campbell's house to load up the plants to transport them to Meadowlark Nursery. Maryann Benoit, Kathleen McGinley and Dave Kennedy met them at Don's house, and everyone helped to move the plants from the vehicles into the nursery.

MORE ON MITES!

Don Campbell shared some interesting information he found on-line at CACTI_ETC Digest 5351, which, incidentally is an excellent blog resource for a wide variety of topics. Malcolm Burleigh offers this overview of miticides, from a September, 15th, 2004, article "All Miticides are not Created Equal."

When it comes to selecting a miticide to control spider mites or other mites, there is sometimes confusion that all miticides are similar in terms of their use and the range of mites that they control. Following are descriptions of five miticides that are generally recommended for controlling indoor and outdoor mites:

Avid: This contains abamectin as the active ingredient is derived from the soil microorganism, *Streptomyces avermitilis*. Avid is labeled for control of two spotted spider mite, European red mite, carmine spider mite, South red mite, spruce spider mite, cyclamen mite, broad mite, and rust and but mites. It can be used to control mites in greenhouses, shadehouses, on field-grown ornamentals, Christmas tree plantations and woody ornamentals. It is a contact and translaminar miticide, which means it penetrates the leaf tissue and forms a reservoir of active ingredient within the leaf. It acts only on mites that are mobile, with no effect on the eggs, and provides up to 28 days of residual activity. It is slow acting but treated mites are immobilized after exposure. From other sources, Avid is considered to be toxic, and really shouldn't be used on cactus and succulents as it can kill them.

Floramite, containing the active ingredient bifenazate is labeled for control of a wide variety of mites: the two spotted spider mite, Pacific mite, strawberry mite, European red mite, citrus red mite, clover mite, south red mite, spruce mite, and bamboo spider mite. It is not active on rust, broad or flat mite. It is a contact miticide, so thorough coverage of all plant parts is essential. It is active on all mite life stages including eggs, and is fast acting with up to 28 days of residual activity. This is an active ingredient in Ortho Ready to Use Rose and Flower insect killer.

TetraSan contains the active ingredient etoxazole and is a growth regulator for mites. It is labeled for control of the two spotted spider mite, citrus red mite, European red mite, lewis spider mite, Pacific spider mite, Southern red mite and spruce spider mite. Like Avid, it is a contact and translaminar miticide with up to 28 days of residual activity. The product is active on the egg, larvae and nymphal stages. While it has a minimal effect on the adult mite, adult female mites that are treated do not produce viable eggs.

Pylon can only be used in greenhouses, and contains the active ingredient chlorfenapyr. It is a contact and translaminar miticide, but also is a stomach poison when ingested.

Vendex is an older miticide with the active ingredient fenbutatin-oxide. It is a restricted use pesticide, works by contact, and is slower acting than most miticides, taking 7-10 days to kill mites. However, it has longer lasting control, about 30 days of residual activity. It works best with the air temperature is above 70 degrees F.

For more information on the products mentioned, consult the label or the manufacture.

“KITCHEN-SCAPE” SESSION SCHEDULED FOR JANUARY C&S MEETING

Members have a treat in store at the January 2010 meeting of the Chile C&S Society meeting. Winton Brophy will present the program and show us the fine points of creating container gardens from items found in the kitchen! She will show us how to make very small succulent gardens from whimsical “oddities”, demonstrate how to make tiny “pots and pans” suitable for tiny plants, and try to chase away the January blues in the process. Winton says that “folks can watch, or those who would like to actively participate can bring their small, quirky container to fill. She will provide the cuttings, soil and other ‘stuff’. And she reminds us to “THINK SMALL!”

SOIL MIX RECIPES VARY

Ken Mosher of the Connecticut Cactus and Succulent Society shares their recipe for a good, general purpose mix:

15 parts Metromix 360/Schultz Cactus Mix/Miracle Grow Cactus Mix/Coir

7 parts #2 or #3 quarts grit (Agway Chicke Grit, Pool filter medium)

4 parts pumice (Agway Drystall) or perlite (Walmart or local nursery)

A sprinkle of Osmacote or superphosphate fertilizer.

Markus Mumper from California suggests:

Two parts pumice

One part compost (Supersoil, a somewhat finely graded compost mix without too much peat.)

One part coir

Add a little more pumice depending on the plant (Ariocarpus, Turbinicarpus, Lithops, etc. like more pumice).

Leo Martin from Phoenix recommends checking out http://www.labs.agilent.co/bot/cactus_home, and look a few lines down to a link “How to search the cacti_etc archives by key word.” Just follow the directions and you can read all about soil mixes. He says to just keep in mind that, for succulents and cacti, you want a pot and soil mix that dries out in about 5-7 days after it’s watered. While you can’t control the humidity and temperature, you can control the mix, the size of the pot, whether the pot is clay or plastic, and how often you water. (Well, some people can control how often they water---others can’t. Those are the same people who can’t stop giving their dogs treats!

Mac from southeast Tennessee, uses a 50/50 volume mix of pat-based soil-less potting mix, and perlite. You can water fairly often with this mix as it drains readily. Do not let the mix completely dry out. Fertilize monthly with 10/10/10 or similar balanced fertilizer, and add some trace element solution if you can find it. Mac concludes that one can grow C&S in ground-up rubber boots if you adjust your growing conditions appropriately!

Stephen mixes 2 parts “Oil Dry” clay aggregate from any big box store or auto parts store as a good replacement for pumice (if hard to find). Mix with 1 part coco coir. Can substitute store-bought cactus mix but he prefers the coir because it doesn’t compact and degrade like many potting mixes do. Add 1 part perlite. He also recommends that the water you use have a pH around 6 to offset the alkaline pH of most tap water

WELL-TRAVELED CACTI

Don Campbell reports that he tidied up and donated six C&S plants to the Colorado C&S Society in Denver for the silent auction at their Annual Dinner Meeting on October 23rd. Janet Schaeffer, Chinle member who lives in Ridgway, attended the ADM in Denver on October 23rd, and was the successful bidder on two of the plants I’d donated. I drove them over on Friday and Janet brought them back to Ridgway on Saturday--a total round trip of over 500 miles making the cactus Janet won really well traveled! So next summer, Janet will be able to boast of having a “Pink Pixie” and some “Orange Gumdrops” in her outdoor garden.

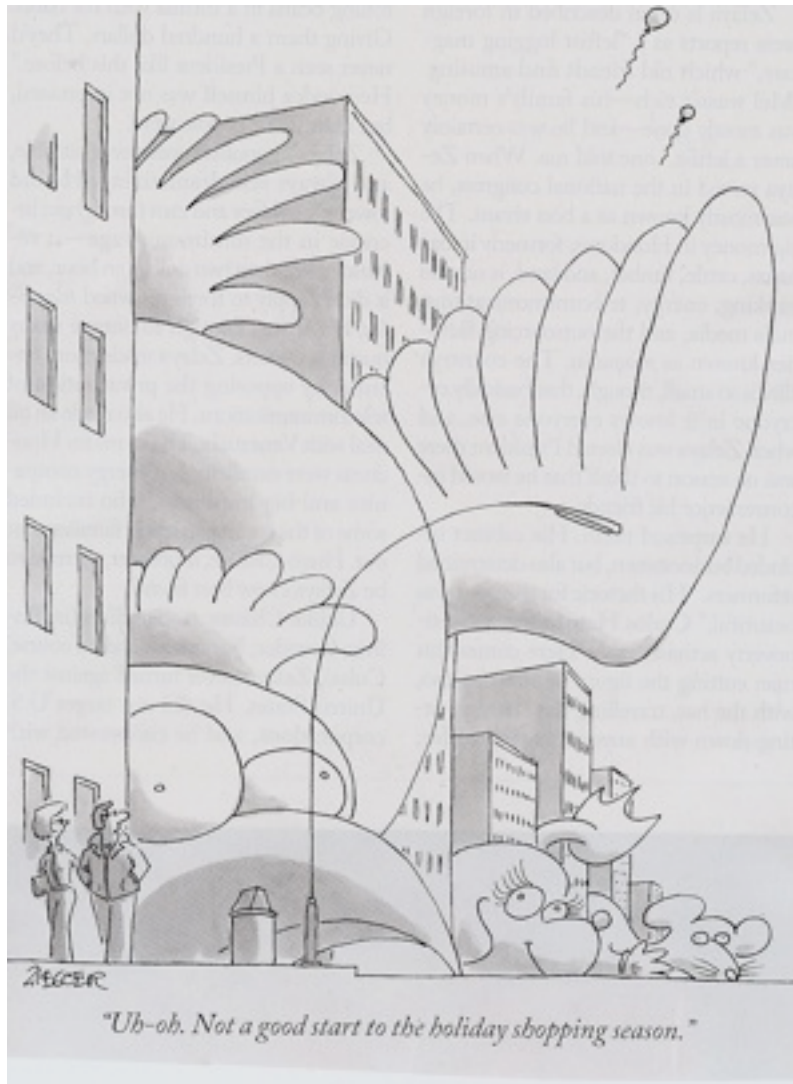
A COMMENT FROM THE NEWSLETTER EDITOR

Hello Chinle members and friends! Just wanted to beg your indulgence while I learn all the ins and outs of my new Mac computer. My PC suffered a sudden (but welcomed) death about two weeks ago. Unfortunately, the learning curve is a bit steep learning a new system, but I am learning about and loving my Mac. Janet Hassell

CALENDAR OF UPCOMING EVENTS

DEC. 10, 2009	ANNUAL MEETING OF THE CHINLE CACTUS & SUCCULENT SOCIETY 5:30 PM - PINON GRILL, TIARA RADO GOLF CLUB
JAN. 14, 2010	Regular Meeting of the Chinle Cactus & Succulent Society Program: Container Gardens on a Small Scale Presenter: Winton Brophy 6:30 pm, Mesa Mall Community Room
FEB. 11, 2010	Regular Meeting of the Chinle Cactus & Succulent Society Program: To be announced. 6:30 pm, Mesa Mall Community Room
MAR. 11, 2010	Regular Meeting of the Chinle Cactus & Succulent Society Program: To be announced. 6:30 pm, Mesa Mall Community Room

The following cartoon is courtesy of the New Yorker magazine, Nov. 30, 2009.
Happy Thanksgiving, everyone!



#####

Chinle Cactus and Succulent Society Officers

President: Dieter Kubisch
dwkubisch@bresnan.net
970-243-7861

Vice President: Don Campbell
campbell.di.cj@bresnan.net
-5088970-263-0910

Secretary: Carolyn Logan
carolyn.logan@bresnan.net
970-523-6363

Treasurer: Pat Severson
pssmesa@gmail.com
970-225-1005

Newsletter Editor: Janet Hassell
janetbill41@bresnan.net

**Chinle Cactus and Succulent Society meets
the 2nd Thursday of each month at 6:30 pm
in the Community Room at Mesa Mall.
Guests are always welcome.**